

Chapter 4

Custom Brushes

Clipart Brushes

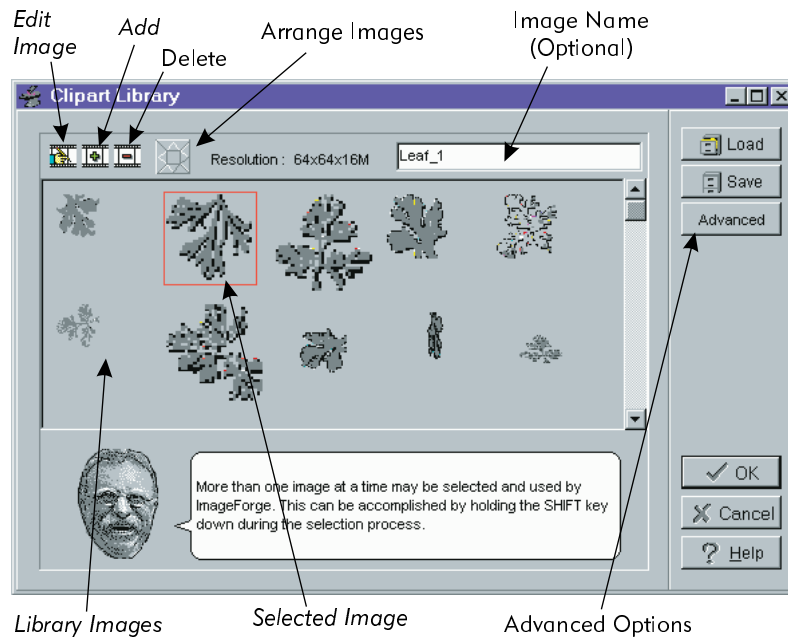
Creating Custom Pen Tips

You are not limited to standard round or square brushes, or even to the enhanced *Watercolor*, *Pen* and other media found by double-clicking the *Brush* tool. Here are some other ways you can paint with custom effects:

Clipart Brushes

You may paint with pre-defined small images, or a series of small images, using the *Clipart Library* tool. By loading a series of images, you can make short work of painting random shapes such as foliage or meadows.

- Select the *Clipart Library* tool from the tool bar.
- Click on the image you wish to use as a brush (if you wish to use more than one image, either drag the mouse to surround the desired images, or hold down the *Shift* key while selecting additional images).
- Select the *Advanced* button to choose the speed and order in which the images are painted.
- Click *OK* and begin painting.

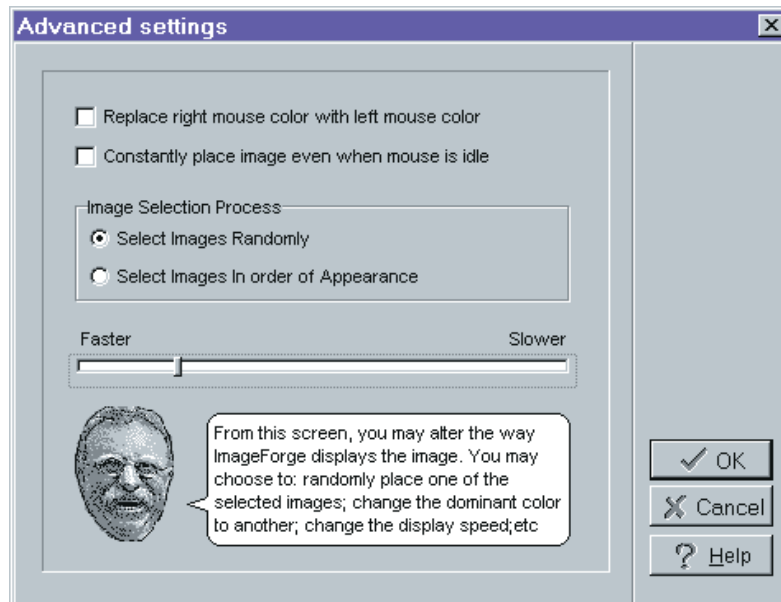


The images are stored in Cursor Library (.CUL) or Icon Library (.ICL) format files. While sample clipart files are included with ImageForge, you may create your own files with programs such as IconForge (go to <http://www.cursorarts.com> to download the trial version). You may also create your own clipart libraries by clicking on the + (Add) button and choosing from the icons and cursors available on your system. Use the Save button to store your library, or use Load to import another library.

⇒ *Tip: You can create Windows format icons with ImageForge. Simply save a 32x32 image as an .ICO Windows icon format file (see the File Type dropdown in the Save As dialog), then import it into the Clipart dialog.*

Advanced Options

Use the *Advanced* button to adjust the way the images are placed:



Replace Right Mouse Color with Left Mouse Color

Use this option to slightly alter the appearance of repeated images by replacing a color within the clipart image with a second color. Select the color to replace with the right mouse button. The color on the left button will replace this color.

Constantly Place Image Even When Mouse Is Idle

This option causes copies of the image to continue to be painted, even while the mouse is stationary.
Note: when painting on the Objects layer, this may result in placing an excessive number of objects.

Image Selection Process

Use the *Order of Appearance* setting to paint the selected images in the order in which they are listed in the Library, or randomly.

Faster/Slower

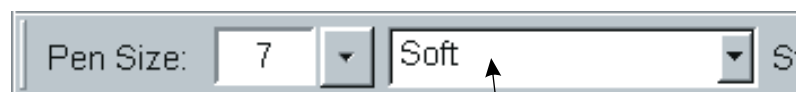
This slider controls how quickly images are repeated as you paint. Use a faster setting to paint more

images, resulting in denser coverage. A slower setting increases the interval between images being painted (use slower settings for fine work or to increase the spacing between images).

✦ *Trick: To further randomize the clipart images while painting, you can alter the appearance of the current clipart image (the image which will be painted next time you click) by clicking on the Rotate, Flip and Effects buttons on the Speed Button bar.*

Custom Pen Tips

Custom brushes are accessed from the *Pen Tip* drop-down on the Tool Options Bar. Click to select from the list of existing pens.



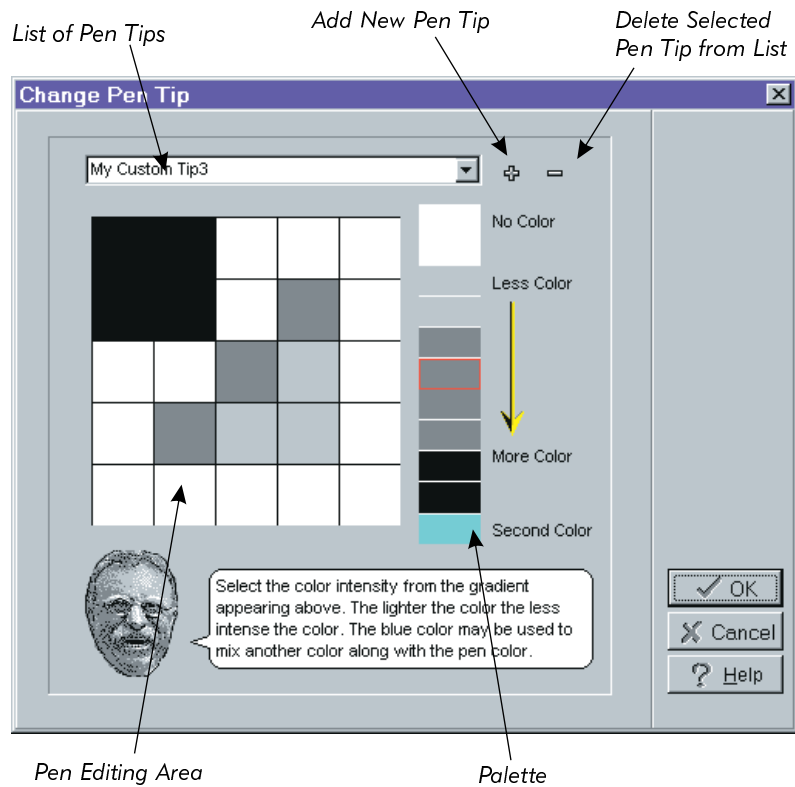
Choose Custom Pen Tip

You can create and edit custom brushes by selecting the *Change Pen Tip* function under the *Options* menu. The editing window for creating custom pen tips allows you to create new brush styles to add to the *Pen Tip* list.

The Editing Window

+/-

Click on the “+” (plus) icon to Add a new *Pen Tip* to the list. Assign the *Pen Tip* a name by typing it into the blank field in the *Drop-Down List* at the top of the window. To delete an existing *Pen Tip*, select the unwanted brush from the *Drop-Down List* and then click on the “-” (minus) icon.



Editing Area

This area is an enlargement of the actual *Pen Tip*.

Click on a value from the *Palette* (see the following section), then click onto one of the cells within this area to apply the value to that section of the *Pen Tip*.

Palette

Shape your pen tip using the colors from the *Palette* area. You change the tip by applying varying intensities to locations on the tip. Select lighter grey palette values to allow more of the original picture to show through the brush. Use darker greys to apply

more paint in these areas, to obscure the original image.

Use the *Second Color* palette value to add the color found on the second mouse button to areas of the brush.